

-test analysi

ILIAD Lite Telemetry Software

Data Displays

GENERAL

Display Types Bus View, DCM View, Quad View, Quick View, Tech View, Video, SL View
Limit Check Dynamic Limit check, Alarms, Record, Report
Quick Look Parameter Set, Job Request, Status

Data Recording

GENERAL

Recording Format IRIG 106 Chapter 10 format
Playback Format IRIG 106 Chapter 10 format (PCM, 1553, ARINC 429, Serial, Analog, Video) MARS II (PCM, 1553) Teletronics (PCM)
Playback Attributes Auto position, variable speed, search, time window
Control VCR type controls

Data Processing

DATA

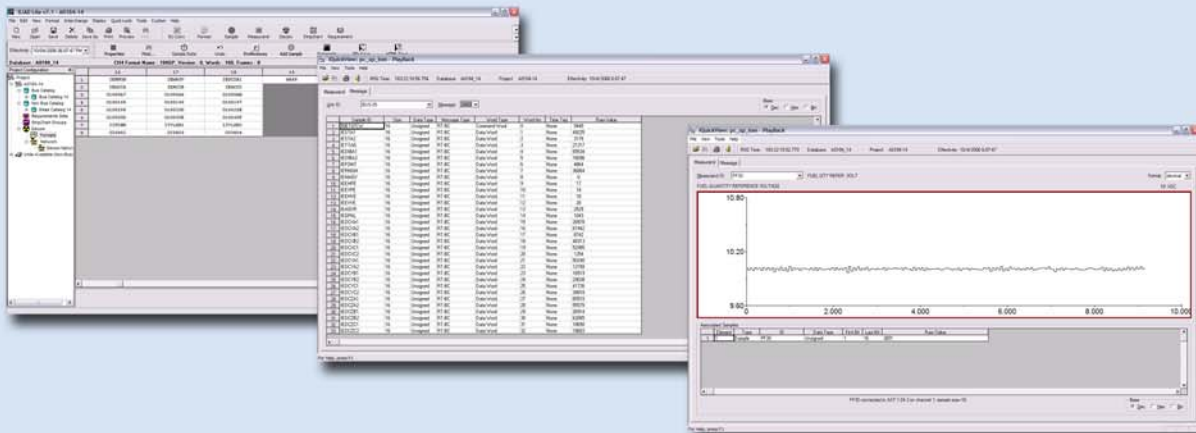
Data Types Unsigned, Signed (2s Comp), Offset Binary, Binary Coded Decimal, 1s Complement, IEEE-754 Floating Pt, 1750A Floating Pt, Sign Magnitude, CVSD, IBM Floating Point, TMS320C3, DEC Float, CAPS Float, ASCII Text

REAL TIME

Conversion Methods Polynomial, Interpolation, Discrete Translation, Bit Weight
Bit Manipulation Bi Mask, Concatenation

DERIVED ALGORITHM

Arithmetic Operations +, -, *, /, POWER, SQRT, ()
Trigonometric Operations SIN, ASIN, SIND, ASIND, COS, ACOS, COSD, ACOSD, TAN, ATAN2, TAND, ATAN2D, ATAN, ATAND
Logarithmic Operations LOG, LOG10, EXP
Logical Operations OR, AND XOR, EQUAL TO, SHLEFT, SHRRIGHT, LESS THAN, GREATER THAN, GREATER THAN OR EQUAL TO, LESS THAN OR EQUAL TO, NOT EQUAL TO
Special Operations CONCAT, IF-THEN-ELSE, CASE, HIGH VALUE, LOW VALUE, LAST VALUE, HOLD, ABS, MOD



MINIMUM SYSTEM REQUIREMENTS

CPU Pentium 4 (1.0 GHz)
Memory 512 MB
Software Microsoft Windows XP or 2000 and Internet Explorer 5.0

EMC²

ILIADSM
For Microsoft Windows

ACROAMATICS
TELEMETRY SYSTEMS

Specifications subject to change without notice